



**Competitor Bulletin 3
December 7, 2023**

3.1 Recce Schedule and cards

A new recce card is attached that shows navigating recce without bullet.

The lettering for points C and D are reversed on the recce card when compared to the other maps and the routebook. However, the directions match. For clarity, the map on the recce card is north on the top, and Black Forest East runs from west to east.

3.2 Parc Expose

Cars must be at parc expose in front of the **Happy Valley Day Lodge** by 1800

3.3 Podium and Banquet Finish

The event will be concluding with some food and the podium at the Black Forest Day Lodge.

3.4 Route Book Changes

Route Book Changes will be posted to Sportity during the day on Friday.

Keith Morison
Clerk of the Course



Recce Instructions

Recce begins at 8 am at the stage start, and the stages will be available in certain time windows to avoid oncoming traffic on the narrow roads.

SS 3, 4,5 Black Forest East (D to C) (Both Passes)

8am to 9:45 for last entry to a stage.

You can run them in either order.

Recommended Route:

Follow routebook from Page 46 to the end of the stage

Follow the transit to page 57, instruction 6, and keep right to rejoin the transit on 47, inst. 10

Follow the routebook to the end of the stage.

At page 57, Instruction 2, turn left to return to the service park.



SS 6, 8 Gem Falcon and SS 7, 9 Gem Express (FIRST PASS ONLY)

10:00 Opens, enter Gem Falcon no later than 10:20

Cars MUST start by 10:20 and must not enter Gem Express without approval that the recce cars have cleared that junction. There will be a volunteer in that location, there is no delay anticipated.

Follow the routebook for stages 8 and 9 starting on page 75

SS 2, 4 Black Forest West (BOTH Passes)

11:00 to 12:30

Follow the routebook from Page 11 to instruction 6 where you turn right, you will join the transit on page 18 at instruction 7. Follow that to the stage start.

Follow the route and transit to Page 27 instruction 5 on page 27. Turn LEFT CAREFULLY, and you will join the route at instruction 4 on page 17, in the transit back to the stage start at instruction 4 on page 17.

SS 9, 11 Gem Falcon and SS 9, 11 Gem Express second pass

12:15 opens, enter Gem Falcon no later than 12:40

Cars MUST start by 12:40 and must not enter Gem Express without approval that the recce cars have cleared that junction. There will be a volunteer in that location, there is no delay anticipated.

Follow the routebook for stages 8 and 9 starting on page 75

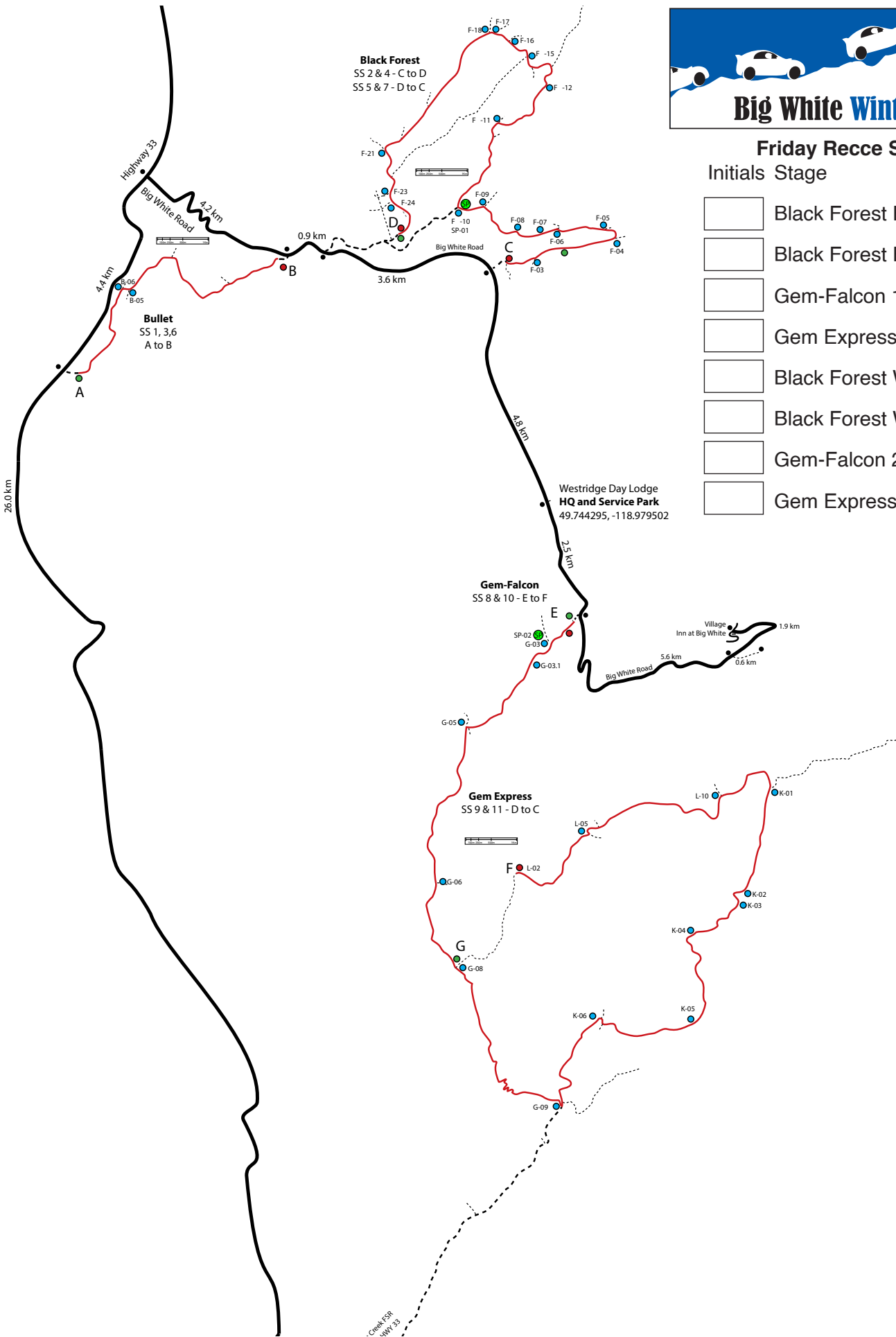


Big White Winter Rally

Friday Recce Schedule

Initials Stage

- Black Forest East (D)
- Black Forest East 2 (D)
- Gem-Falcon 1 (E)
- Gem Express 1 (G)
- Black Forest West 1 (C)
- Black Forest West 2 (C)
- Gem-Falcon 2 (E)
- Gem Express 2 (G)



Created by WWF 23